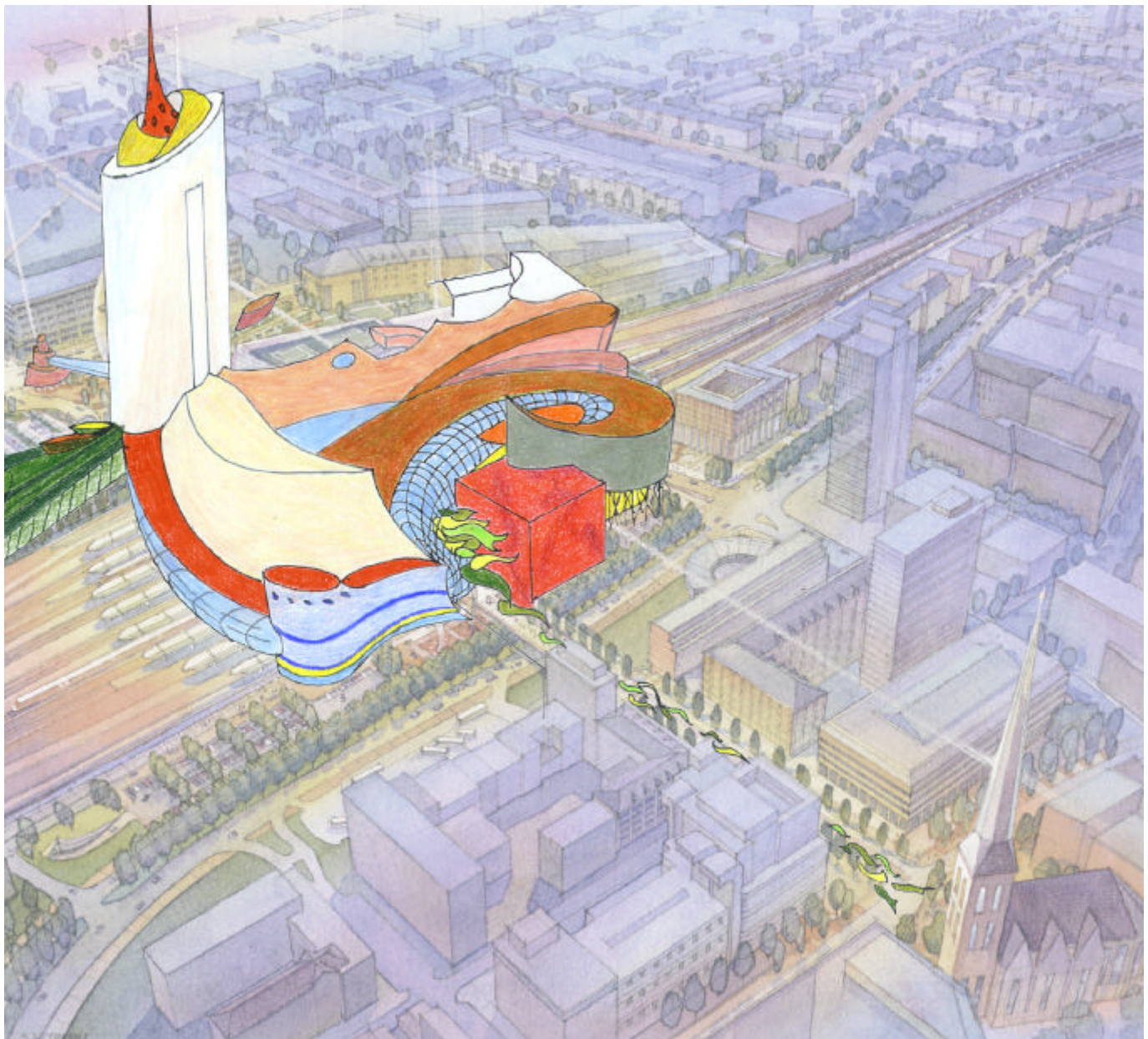


***Gínestet*** blueprint for the project **3DO** (principal train station, Dortmund, Germany)  
presentation of the sketches to the municipal council in July 2002

To our days about than 60 sketches, one painted plaster model and two bronze models have been made



Birds-eye view of the complex 3DO



Colored plaster model scale  
1:500

The building seems to be more compact than in the drawing, but this is due to the scale of the model





Colored plaster model scale 1:500

The building seen from south east  
shows the plain face of the hotel  
tower showing east

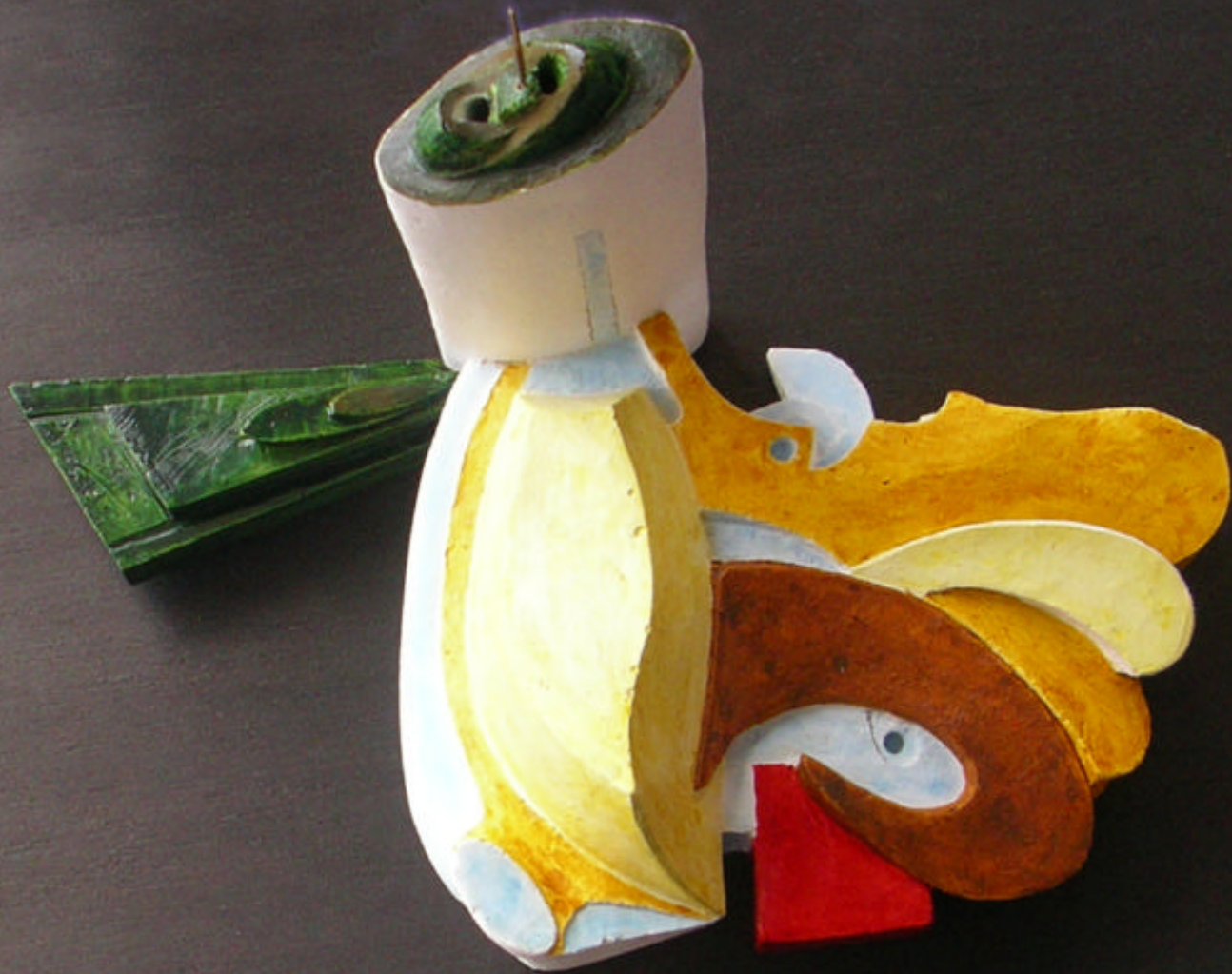


Alternative sculptural concepts of the building's volumes



Top diagonal view of the model with the light coming from east



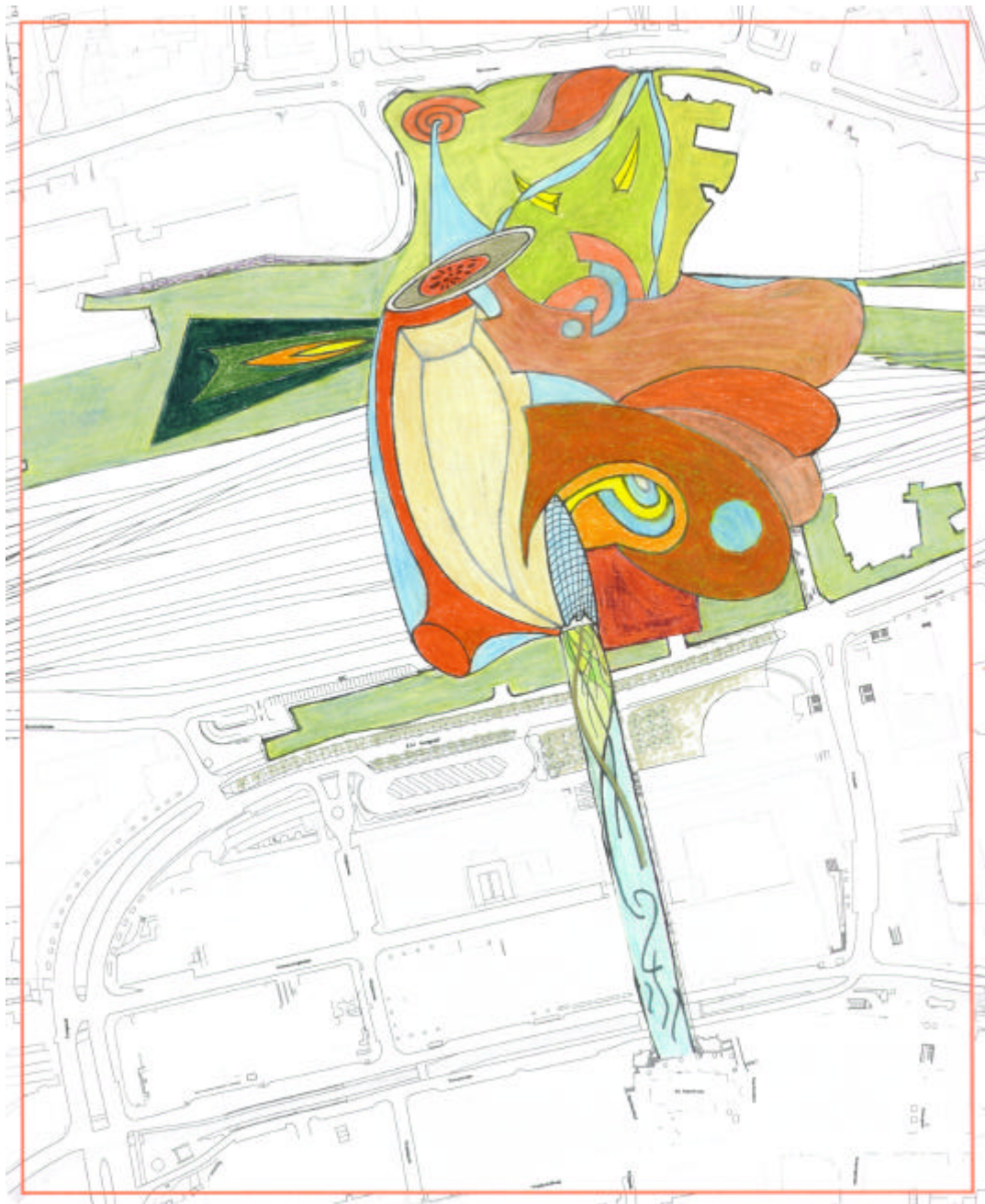


Top diagonal view of the model with the light coming from west

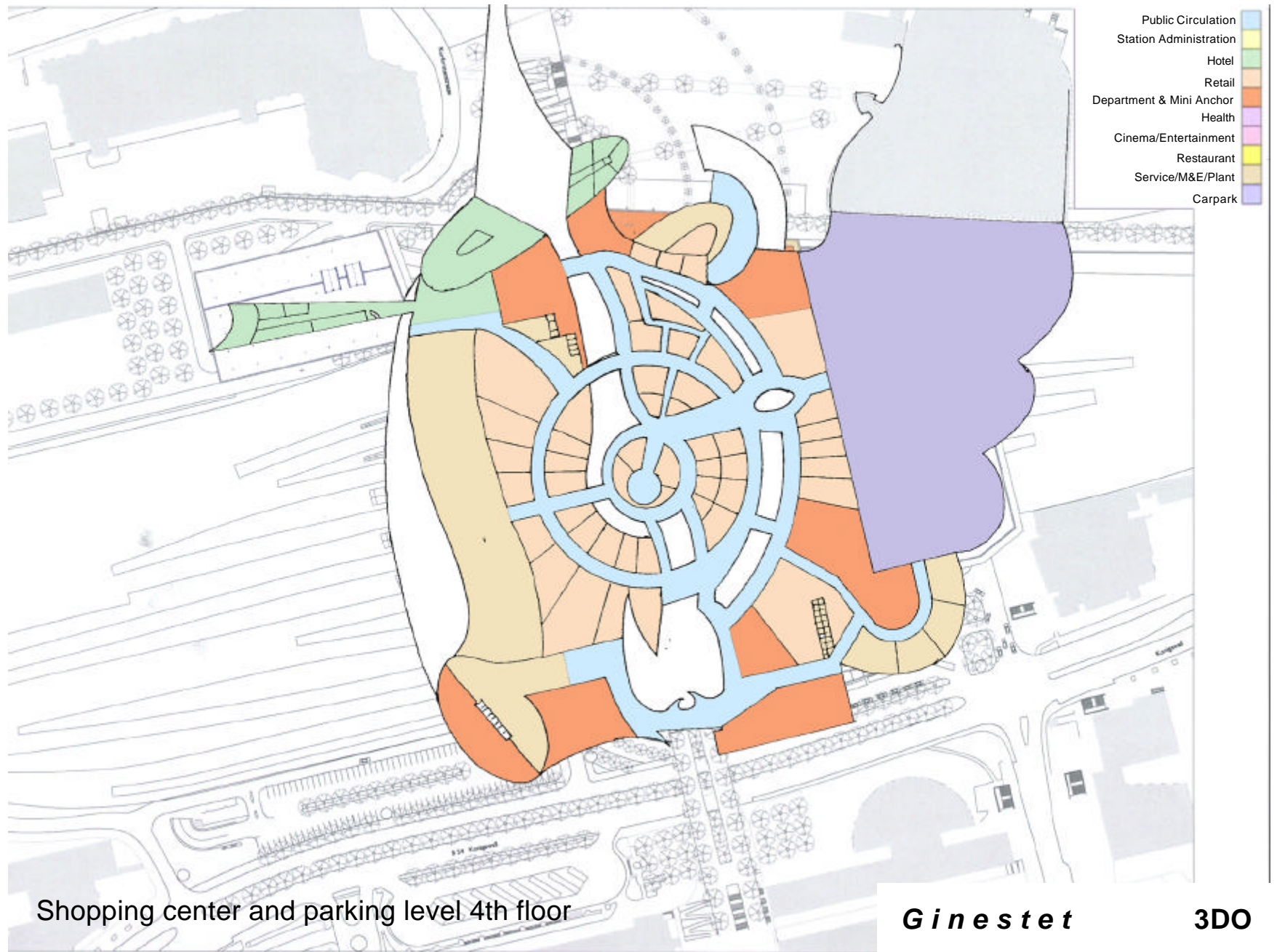


Top view of the model





Top view drawing





- Public Circulation
- Station Administration
- Hotel
- Retail
- Department & Mini Anchor
- Health
- Cinema/Entertainment
- Restaurant
- Service/M&E/Plant
- Carpark

Passenger entrance level, 2nd floor

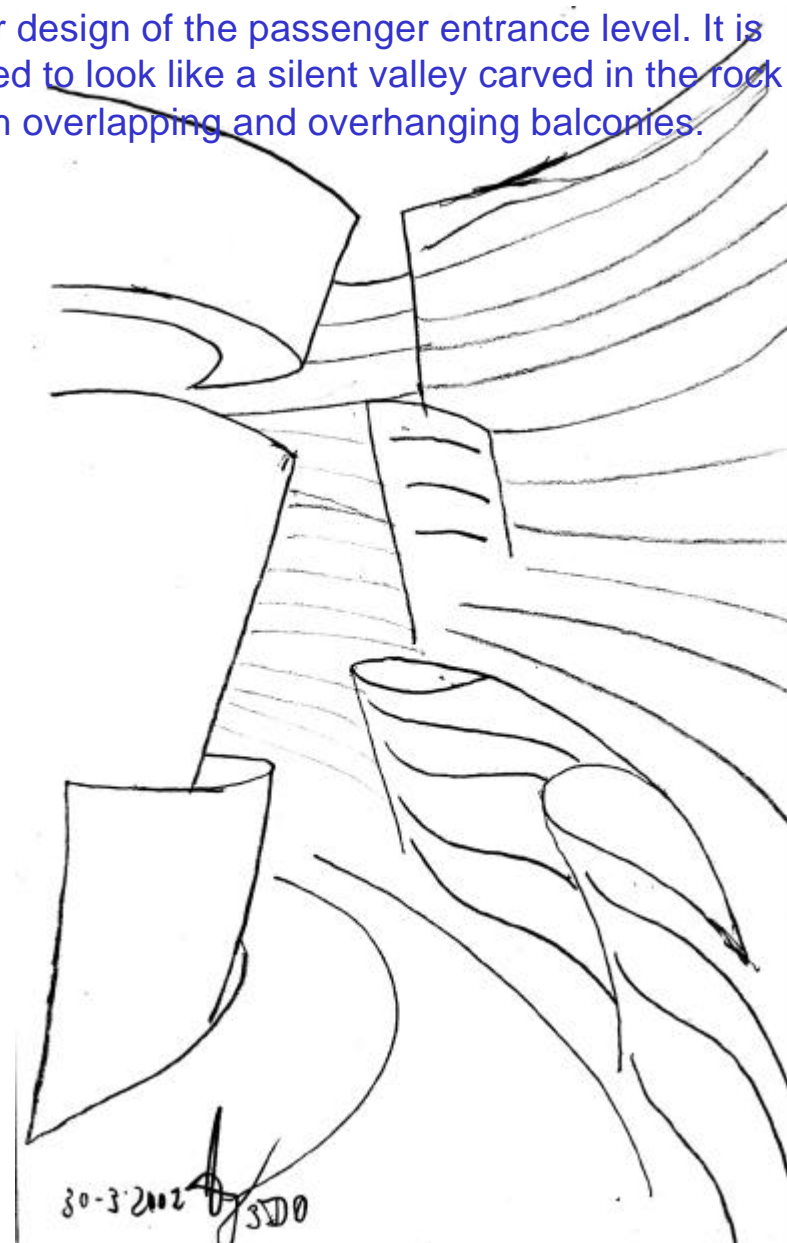
***G i n e s t e t***

**3DO**





Interior design of the passenger entrance level. It is supposed to look like a silent valley carved in the rock with overlapping and overhanging balconies.



No station until now has been designed to be silent. This may turn into an attraction for tourists.



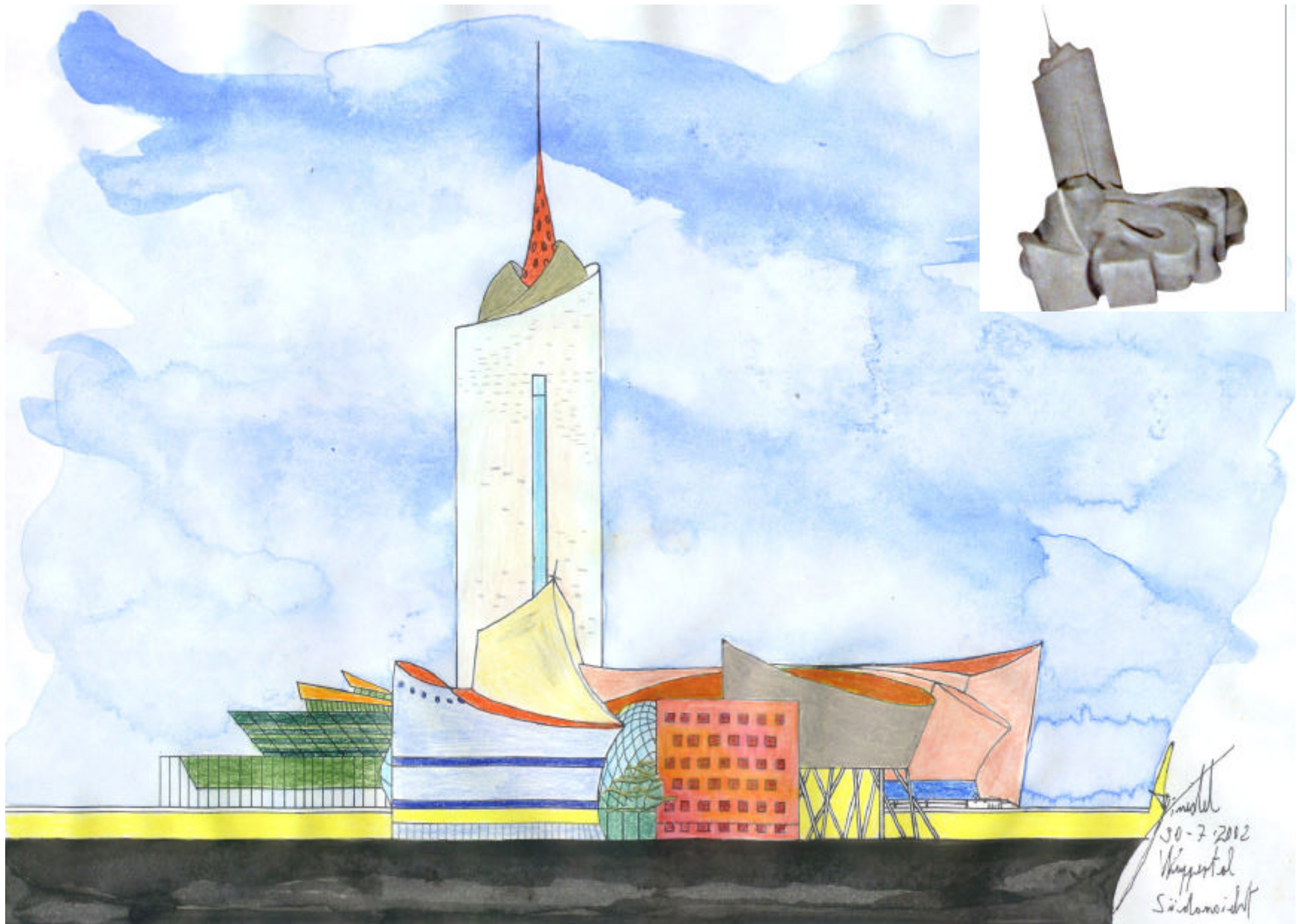
West front-elevation





West front-elevation



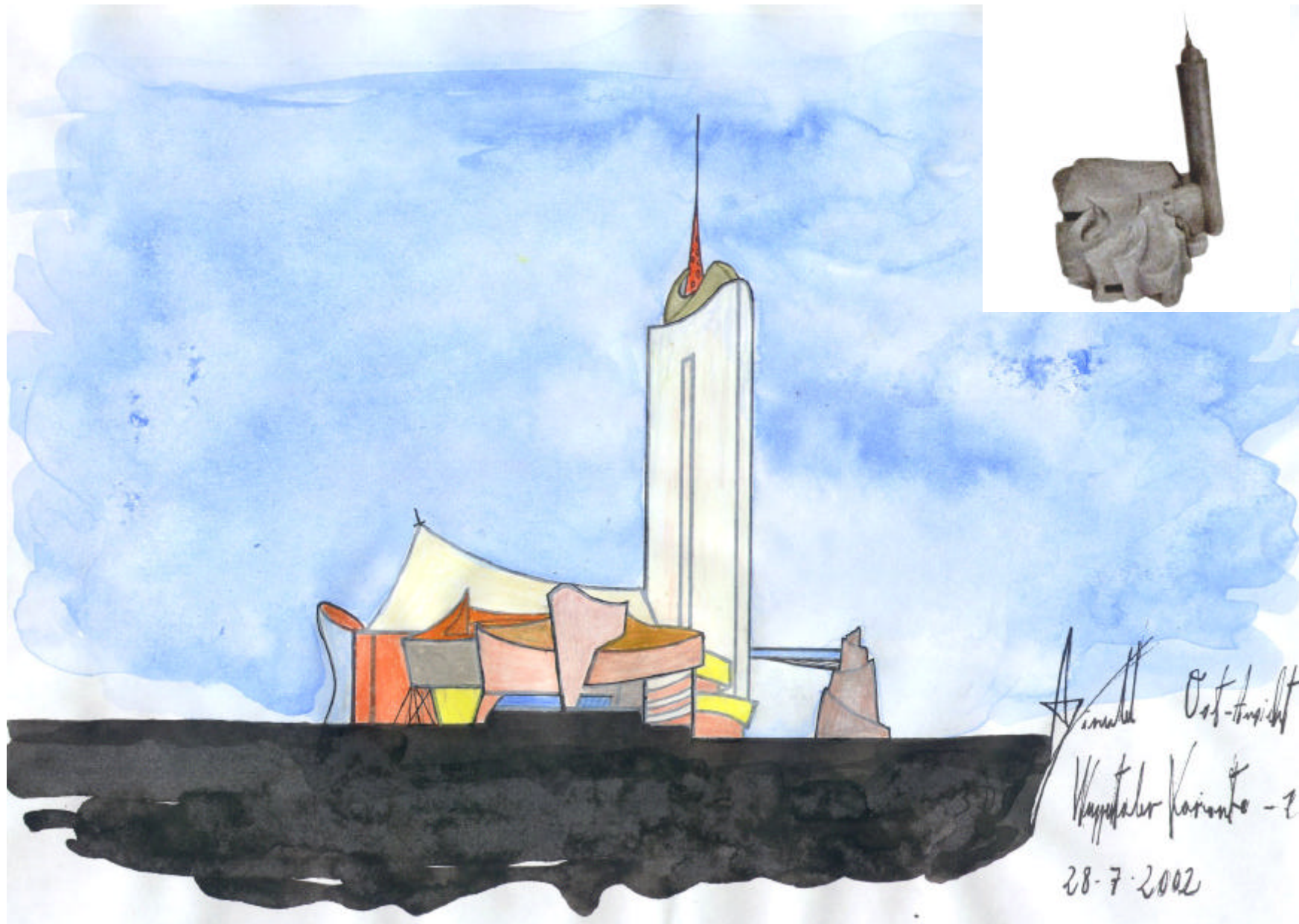


South front-elevation



South front-elevation





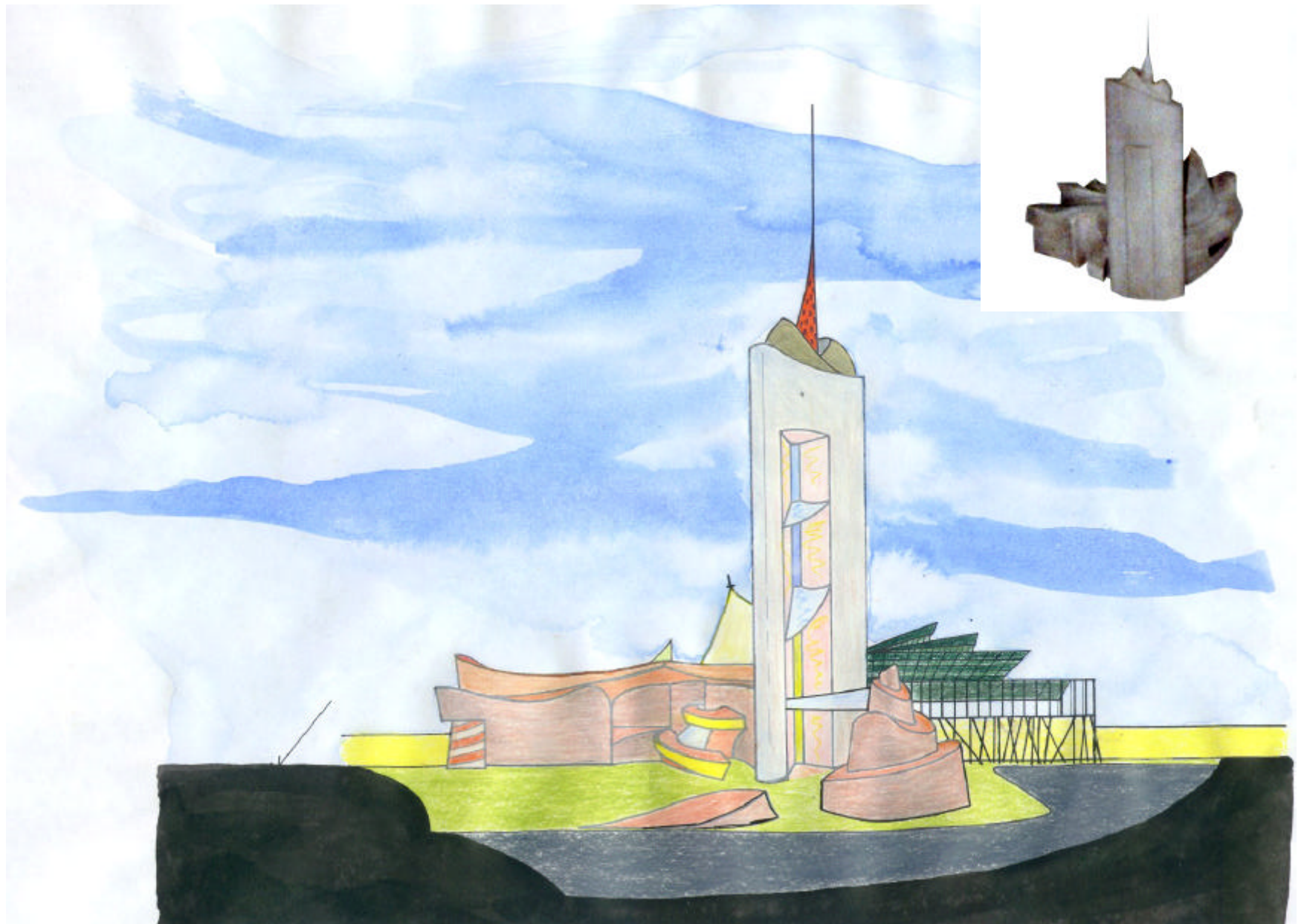
East front-elevation

Amade Ost-Ansicht  
Kuppelbau Variante - 2  
28-7-2002



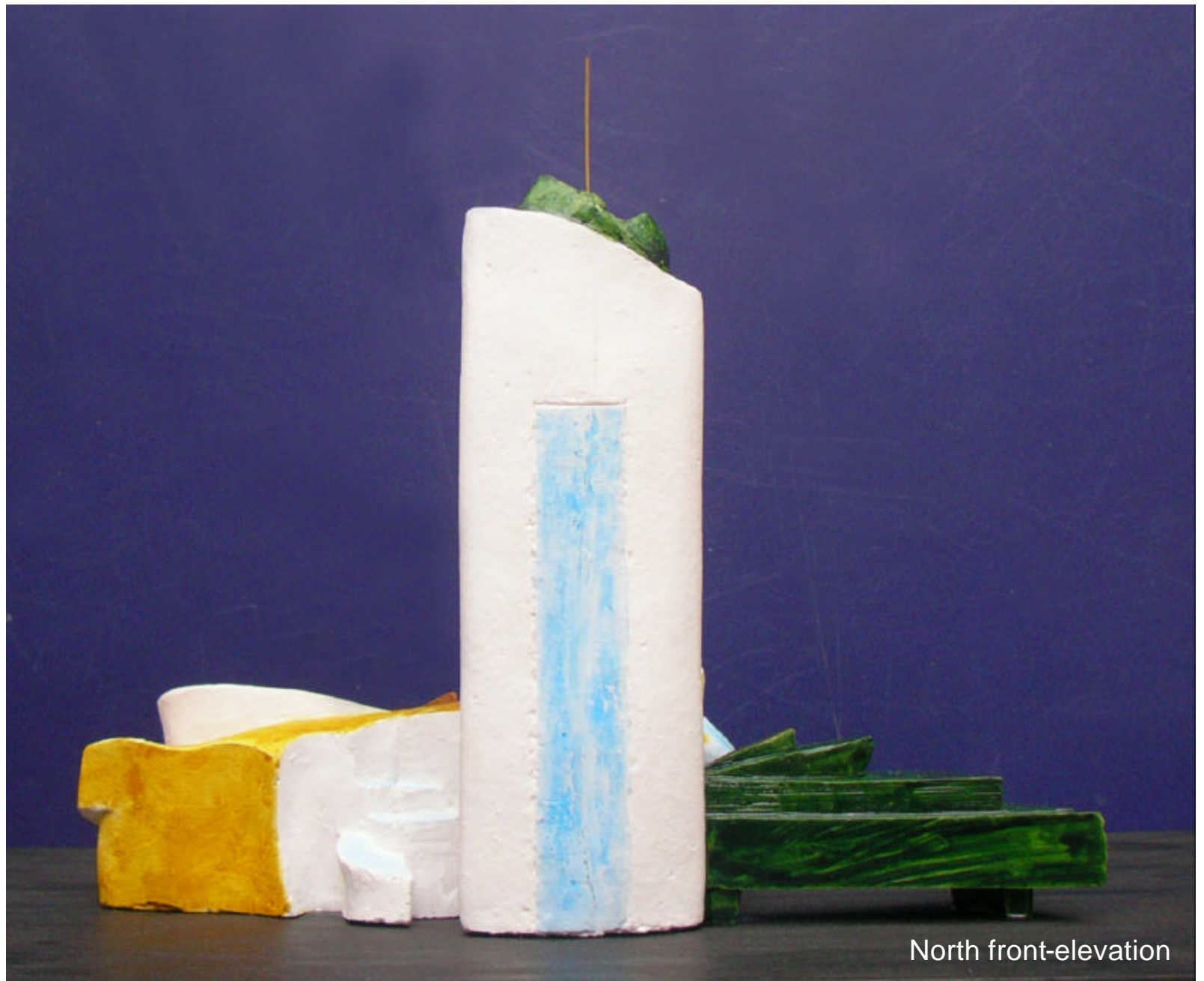


East front-elevation of the model without the Vladimir Tatlin/Giorgio de Chirico tower invented in the drawing. This tower is there to allow visitors to enter the tower and the station from high above the ground. People do not have to crawl to the feet of the tower. They can lift them selves up before entering the high element, the tower.



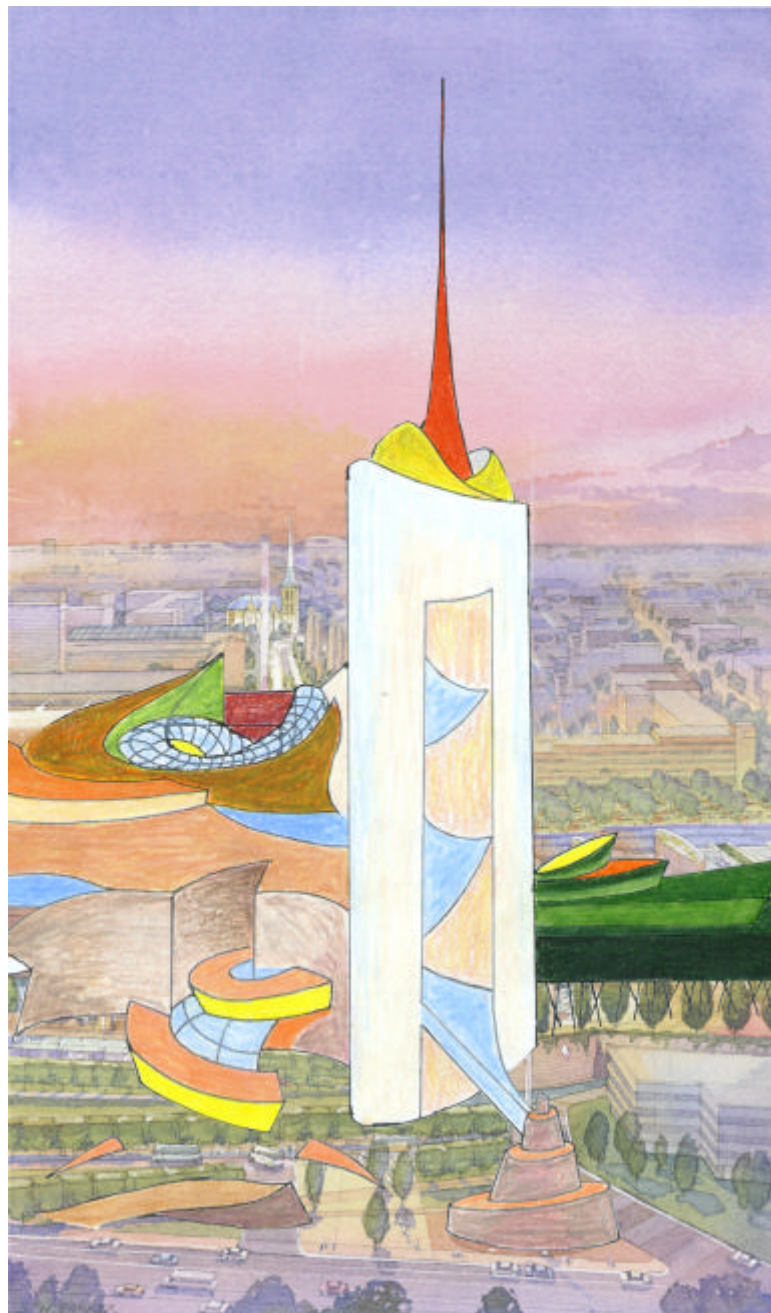
North front-elevation





North front-elevation





North front-elevation



North front-elevation



The next two pictures show two negative examples for what should not be done in this architecture.

The picture on the right shows the “Grande Arche” in Paris “La Défense” is as bright as it should be thanks to the materials, but it is not a piece of art. The gap in my tower has to become a piece of Art. I want the surfaces of glass to be of different colors and perfectly mirroring the sunlight shining bright from morning to evening. The complete gap should become one big glass design, issued of a drawing. There could also be effects of holography on the windows.

The picture on the left shows a narrow gap in a building as I want it, but made in dark and somber materials which are not inviting to any body. My gap is thought as a gap into paradise. A gap into paradise is more of a symbol of hope regarding the city than any thing else.







Alternative perspectives

